



FOR **T**EX[®]

Textured Wood Effect Cladding Systems

FORTEX[®]

Fortex is a range of innovative cladding products that couple the benefits of low-maintenance PVC with the authentic look and feel of real timber. The products have an attractive textured woodgrain effect and come in a range of standard and bespoke colours.

Fortex is available in a range of styles and in single and double plank formats. The double plank format makes installation even easier and quicker than normal. In addition, Fortex is UV and weather resistant, and requires little maintenance once installed which is a major benefit for the owners of residential homes, mobile homes and commercial buildings.

A durable appearance

For many of us, our house represents the biggest investment of our lives. Meticulous and regular maintenance will enable you to retain the value in your home. However, by fixing Fortex cladding to your home you will make that job easy - it's UV and weather resistant and just requires an occasional wipe down with water and a mild detergent to maintain a clean and grime free appearance. Freefoam's cladding products qualify for a 10 year guarantee*.

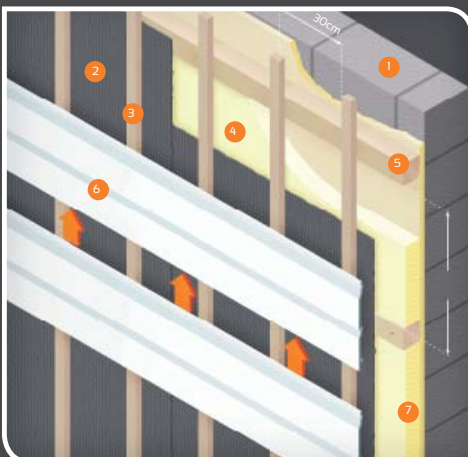
Invest better; invest green

Energy bills are high and set to get higher in the future. While we have little control over these increases, we are not defenseless! Did you know that the deterioration of the exterior of your house - cracks, leaks and accumulations of dampness - is costing you dearly? In fact, a damp exterior loses almost all of its insulation power.

One solution is to insulate the exterior of your home with Fortex cladding. Not only will you reduce your energy bill, but you will also reduce CO2 emissions thus directly benefitting the environment. Designed for all types of exteriors - brick, masonry or concrete - the fixing of Fortex cladding is quick and easy, and you will feel the benefits immediately.

The Building Research Establishment's (BRE) 'Green Guide To Specification' has given PVC cladding an A+ Rating when installed with standard components.

External Insulation Concept



- 1 Wall
- 2 Impermeable membrane
- 3 Primary timber frame
- 4 Dashing
- 5 Horizontal timber battens
- 6 Freefoam cladding
- 7 Insulation



Freefoam Cladding

Freefoam cladding products are produced from cellular PVC. A co-extrusion process enables them to be covered with a layer of PVC resistant to UV rays and discolouration. An additional embossing process gives the Fortex products their textured woodgrain effect.

Cladding Profiles

FCD300E

300 mm double plank with channels

FCF170E

Flat 170 mm single plank

FCI50E

150mm single plank with channel

Material

- Cellular PVC
- UV resistant coloured co-extruded skin
- Density: 510 kg/m³
- Expansion coefficient: $5 \times 10^{-5} / ^\circ\text{C}$

Appearance

Textured woodgrain surface

Tolerances

- Width: +/- 0.5 mm
- Length: +/- 5 mm
- Thickness: +/- 1 mm

No Painting
Required

Double Plank
Cladding

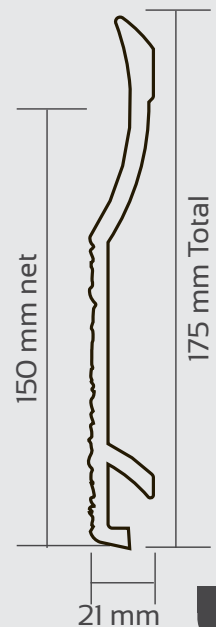
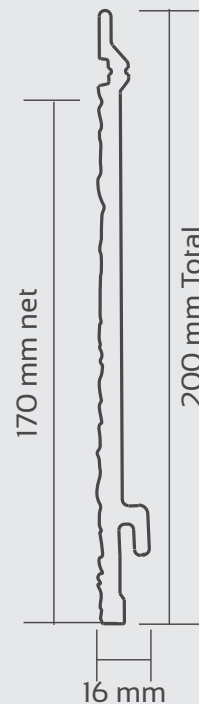
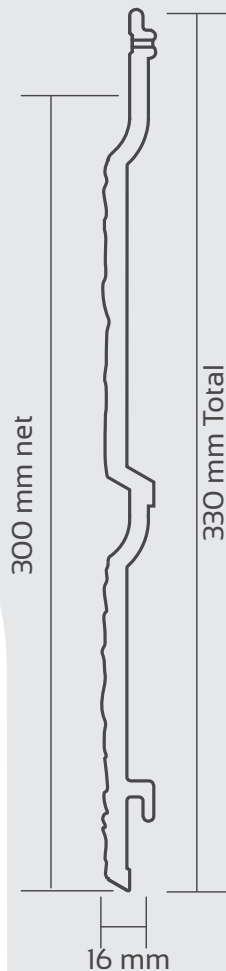
FCD300E

Weatherboard
Cladding

FCF170E

Shiplap
Cladding

FCI50E



Fire Resistance



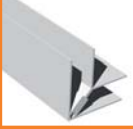



Freefoam cellular PVC conforms to the following requirements:


- BS 476: Pt 6:1989 Resistance to Fire Propagation - Class 1
- BS 476: Pt 7:1987 Resistance to Spread of Flames - Class 1Y

Thermal Insulation

Freefoam profiles, due to the cellular foam core composition, have a general thermal conductivity rate of between 0.06 and 0.1 W/mK (depending on the configuration and profile thickness). This represents a performance superior to timber or other natural products.



| Accessories | Cladding products | | |
|---|---|---------------------------------|---------------------------|
| | Double Plank Shiplap Cladding (FCD300E) | Weatherboard Cladding (FCF170E) | Shiplap Cladding (FC150E) |
|  2 Part Universal Edge Trim (FCD201) | ✓ | ✓ | |
|  Universal Edge Trim (FCD202) | ✓ | ✓ | |
|  2 Part Corner Trim (FCD204) | ✓ | ✓ | |
|  Joint / 'H' Trim (FCD205) | ✓ | ✓ | |
|  Butt Joint (FCD209) | ✓ | | |
|  Starter Trim (FCD212) | ✓ | ✓ | |

| Accessories | | Cladding products | | |
|---|--|---|---------------------------------|---------------------------|
| | | Double Plank Shiplap Cladding (FCD300E) | Weatherboard Cladding (FCF170E) | Shiplap Cladding (FC150E) |
|  | External Cladding Reveal Liner (FC219) | ✓ | ✓ | ✓ |
|  | Butt Joint (FCF209E) | | ✓ | |
|  | 2 Part Universal Edge Trim (FC201) | | | ✓ |
|  | Universal Edge Trim (FC202) | | | ✓ |
|  | Corner Trim (FC203) | | | ✓ |
|  | 2 Part Corner Trim (FC204) | | | ✓ |
|  | Joint / 'H' Trim (FC205) | | | ✓ |
|  | Drip Trim (FC206) | | | ✓ |
|  | Butt Joint (FC209) | | | ✓ |
|  | Starter Trim (FC212) | | | ✓ |
|  | 2 Part Joint Trim (FC215) | | | ✓ |
|  | Starter Trim with Batten Cover (FC218) | | | ✓ |

Fixing Cellular Cladding Systems.

In order to achieve a successful installation, it is essential that Freefoam cladding products are fixed to a sound, rigid substrate. Where possible, full replacement rather than capping of existing timbers is recommended. Studwork should be at maximum 600mm centres up to two storeys and 400mm above that for white cladding; and maximum 400mm centres for other colours and foiled woodgrains. If insulation is used, it should be protected by a waterproof breathable membrane and supplementary battens should be inserted to ensure minimum air space is maintained.

1. Fix battens vertically with a breathable moisture barrier behind them, fig.1

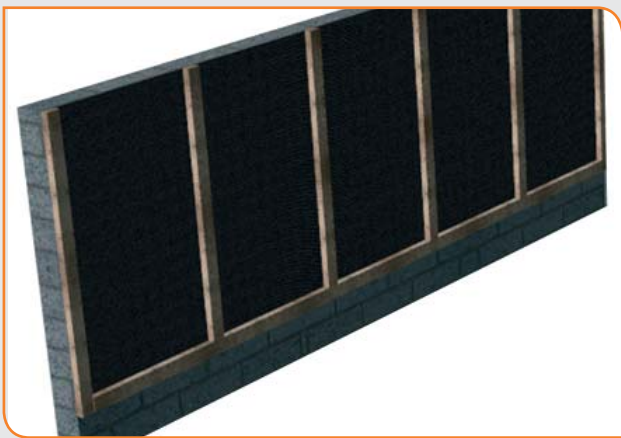


fig 1
Showing moisture barrier and battens before the cladding begins

3. Fix perimeter trims i.e. part 1 of 2-part corner trims and U-trims in place:
 - a. Fix 'under part' to relevant corners, fig 3.1

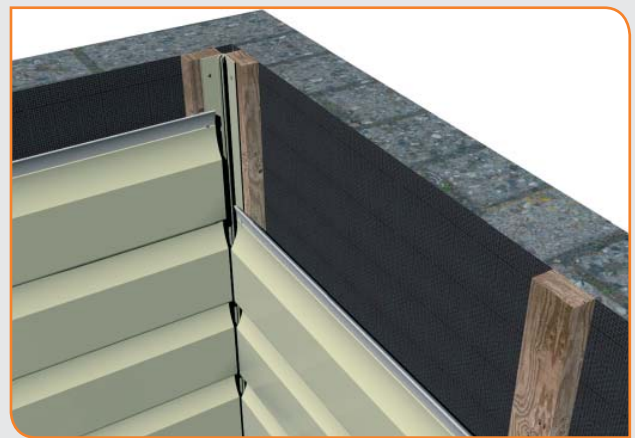


fig 3.1
Showing female component of 2-part corner trim being applied once cladding is finished

2. Fix starter trim at the bottom of the area to be clad, ensuring that the back lip of the cladding board is engaged in the lug of the starter trim, fig.2



fig 2
Showing starter trim and showing the use of the universal corner trim for external angles

- b. Fix part 2 of 2-part corner trim once the wall is fully clad, fig 3.2.



fig 3.2
Showing the male component of 2-part corner trim being applied once cladding is finished



c. Fix U-trim at the edge of the wall on the final batten, fig 3.3

5. When fitting the top cladding board, use packing behind the board where necessary to ensure that the face of the cladding is aligned. Once the wall has been fully clad, fix part 2 of the universal U-trim along the top of the boards to give a neat finish, fig.5



fig 3.3
Showing how the cladding is capped by the U-trim



fig 5
Top edge detail showing packing piece and 2-part Universal trim.

4. Continue to fit other boards as above using:

a. A butt joint to break the joint, fig.4

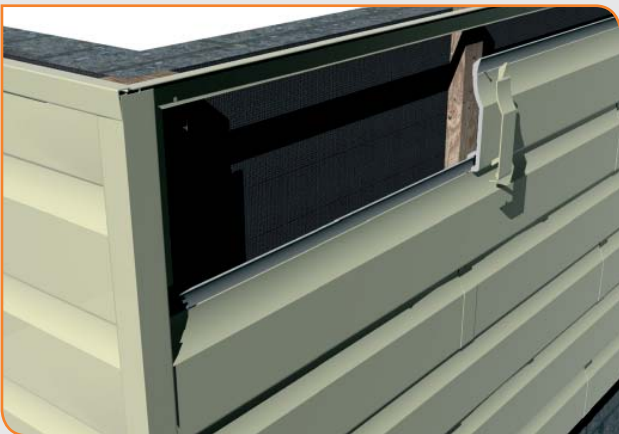


fig 4
Joint detail showing use of butt joint moulding

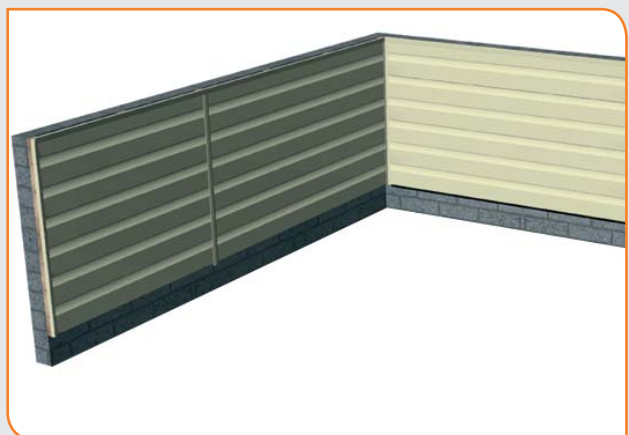


fig 6
Fully clad wall

or
b. A straight H-trim joiner for a continuous seam, fig.5



COLORMAX[™] technology

Freefoam's innovative Colormax[™] technology provides ground-breaking colour variety, colour matching and colourfastness. By using a proprietary formulation that contains a unique selection of stabilisers and pigments specially chosen for their high colourfastness properties, Freefoam can confidently offer a wide range of colours.

As a result specifiers, architects, contractors and homeowners can now put their individual mark on their house or project with ease. Furthermore, the inherent strength of the technology enables Freefoam to offer a 10-year guarantee* on all colours.



White



Pale Gold



Sand



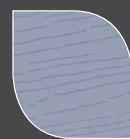
Sable



Light Blue



Storm Grey



Colonial
Blue



Agryl
Brown

FORTEX RANGE

Colour Code



| Code | Description | Unit | Units per pack | Available Colours |
|-----------------------------------|--|-------|----------------|-------------------|
| EMBOSSSED SHIPLAP CLADDING | | | | |
| FC150E | 150mm Embossed Shiplap Cladding | 5m | 5 | ○ ● ○ ● ● |
| FC201E | 2 Part Universal Edge Trim | 5m | 10 | ○ ● ○ ● ● |
| FC204E | 2 Part Corner Trim (also use for Open V) | 5m | 5 | ○ ● ○ ● ● |
| FC205E | Joint / 'H' Trim | 5m | 5 | ○ ● ○ ● ● |
| FC209E | Butt Joint | Piece | 10 | ○ ● ○ ● ● |
| FC212E | Starter Trim | 5m | 5 | ○ ● ○ ● ● |
| FC219 | External Cladding Reveal Liner | 3m | 5 | ○ ● ○ ● ● |



| Code | Description | Unit | Units per pack | Available Colours |
|--|--|-------|----------------|-------------------|
| EMBOSSSED DOUBLE PLANK SHIPLAP CLADDING | | | | |
| FCD300E | 300mm Emboss Shiplap Dbl. Plank Cladding | 5m | 2 | ○ ● ● ○ ● |
| FCD201E | 2 Part Universal Edge Trim | 5m | 5 | ○ ● ● ○ ● |
| FCD202E | Universal Edge Trim | 5m | 5 | ○ ● ● ○ ● |
| FCD204E | 2 Part Corner Trim | 5m | 5 | ○ ● ● ○ ● |
| FCD205E | Joint/'H' Trim | 5m | 5 | ○ ● ● ○ ● |
| FCD209E | Butt Joint | Piece | 5 | ○ ● ● ○ ● |
| FCD212E | Starter Trim | 5m | 5 | ○ ● ● ○ ● |
| FC219 | External Cladding Reveal Liner | 3m | 5 | ○ ● ● ○ ● |



| Code | Description | Unit | Units per pack | Available Colours |
|------------------------------|--------------------------------|-------|----------------|-------------------|
| WEATHERBOARD CLADDING | | | | |
| FCF170E | 170mm Weatherboard Cladding | 5m | 5 | ○ ● ● ○ ● |
| FCF209E | Butt Joint | Piece | 10 | ○ ● ● ○ ● |
| FCD201E | 2 Part Universal Edge Trim | 5m | 5 | ○ ● ● ○ ● |
| FCD202E | Universal Edge Trim | 5m | 5 | ○ ● ● ○ ● |
| FCD204E | 2 Part Corner Trim | 5m | 5 | ○ ● ● ○ ● |
| FCD205E | Joint/'H' Trim | 5m | 5 | ○ ● ● ○ ● |
| FCD212E | Starter Trim | 5m | 5 | ○ ● ● ○ ● |
| FC219 | External Cladding Reveal Liner | 3m | 5 | ○ ● ● ○ ● |

- White ○
- PB: Pale Blue ●
- CLB: Colonial Blue ●
- PG: Pale Gold ○
- AB: Argyl Brown ●
- SAB: Sable ●
- SG: Storm Grey ●
- SAND: Sand ●



Note: A range of other standard, non-embossed, products are available from Freefoam Plastics - see our product catalogue or visit our website (www.freefoam.com) for details.



FORTEX[®]

Textured Wood Effect Cladding Systems

- ✓ Fortex surfaces: clearly defined woodgrain texture (extruded without a rolling process)
- ✓ Colormax 'cool pigment' surfaces are resistant to UV and discolouration
- ✓ Low maintenance
- ✓ Washable
- ✓ 10 year guarantee*
- ✓ Easy fit
- ✓ No painting required

Since 1990, Freefoam has specialised in the production of innovative cladding systems, roofline systems and rainwater systems. Its products are distributed throughout the UK, Ireland and Europe.

Freefoam operates to an intergrated Management system incorporating ISO 9001:2008 Quality and OHSAS 18001:2007 Health & Safety standards for continuous improvement.

Product colours shown in this brochure are for availability identification only. Please see colour swatch or product samples for exact colour representations.

www.freefoam.com
sales@freefoam.com

Central Commercial Park
Centre Park Road
Cork
IRELAND

T 021 496 6311
F 021 496 5273

77-83 St James Mill Road
Northampton
NN5 5JP
UK

T 01604 591110
F 01604 580299

May 2010